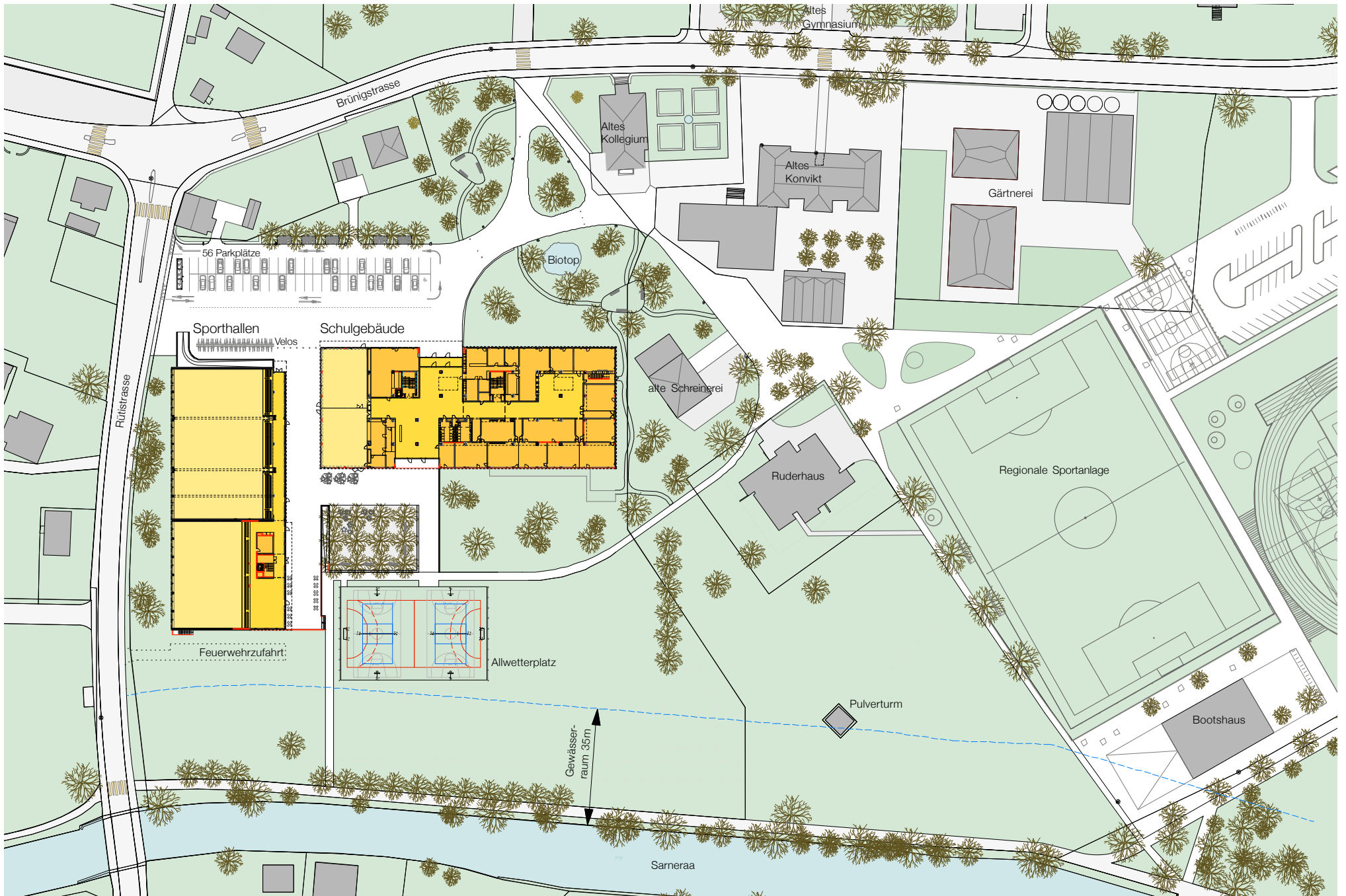


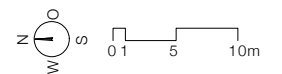
# Ausbau / Sanierung Kantonsschule und Sportanlagen Sarnen Planbeilagen, Mai 2009



Modellansicht Nord-/Ostfassaden

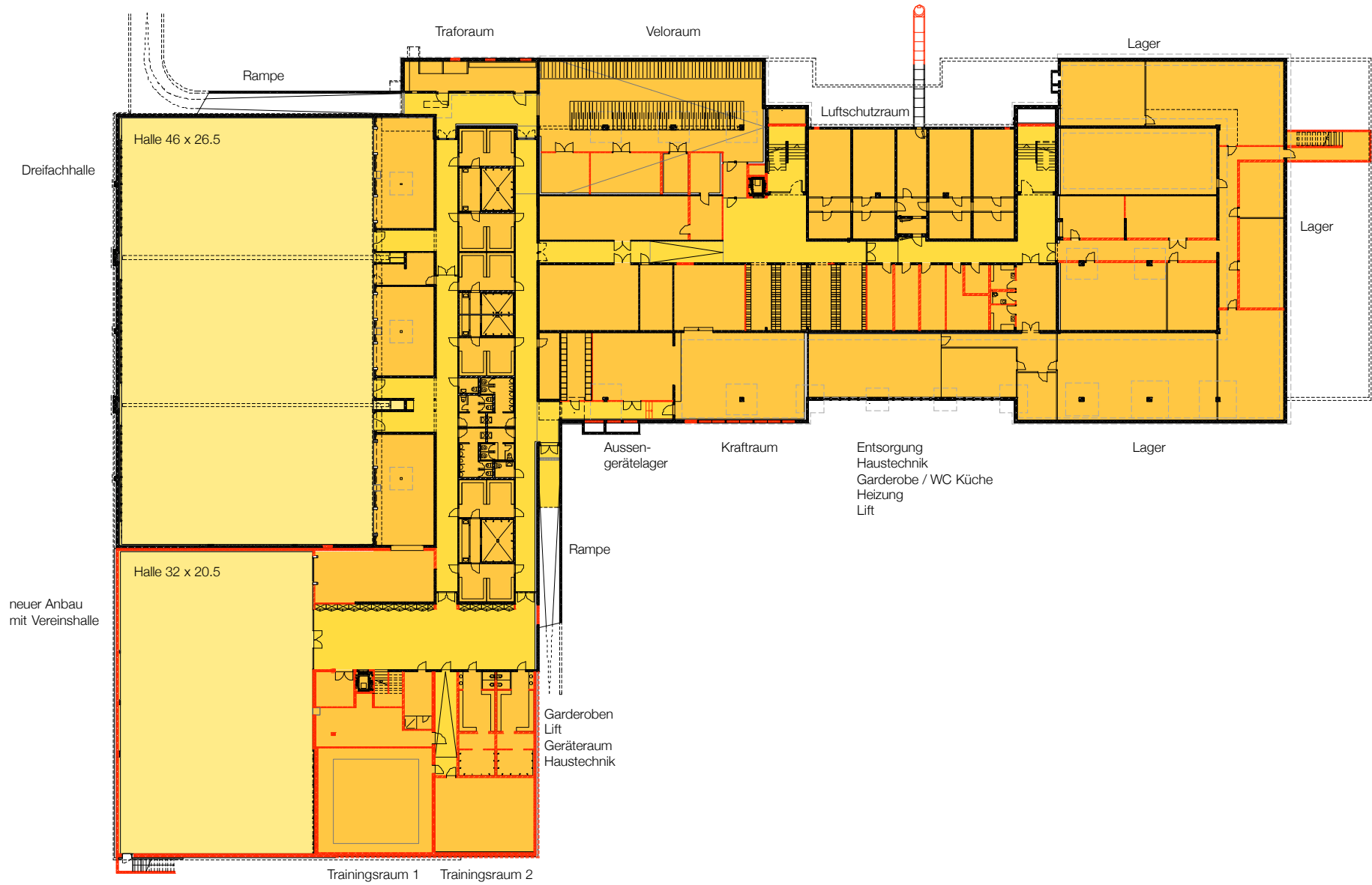


Umgebung



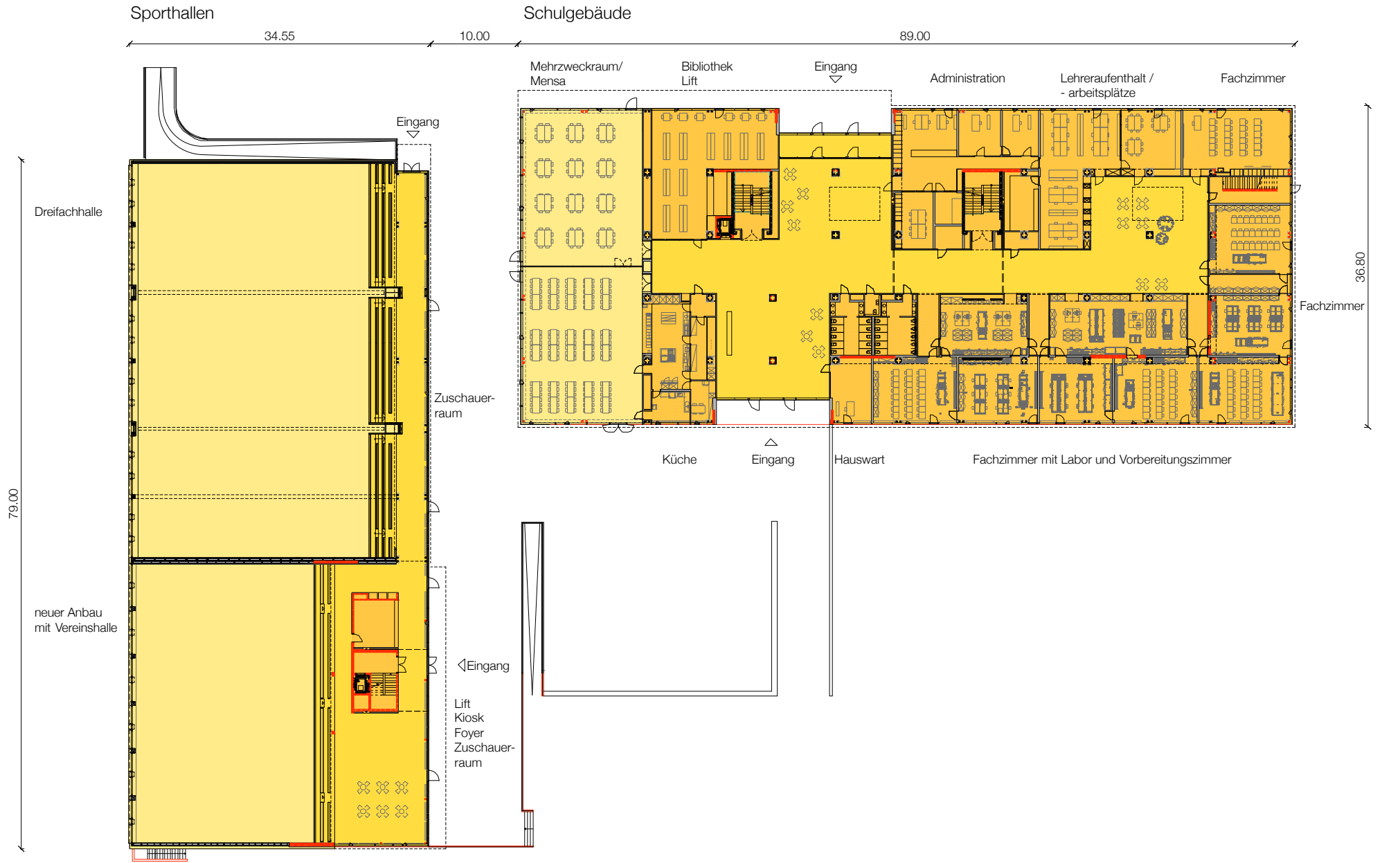
Sporthallen

Schulgebäude



Untergeschoss

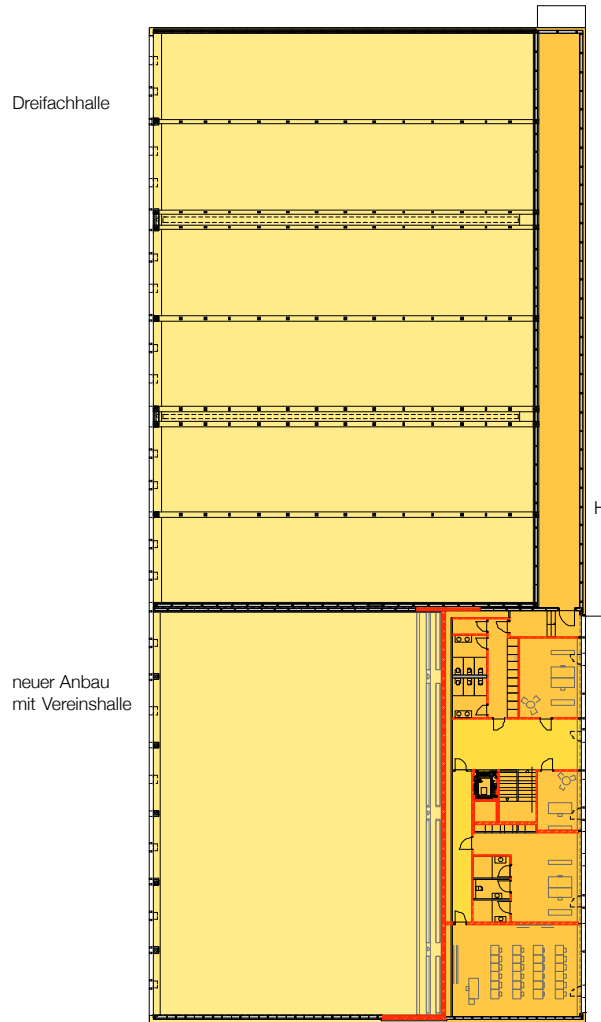




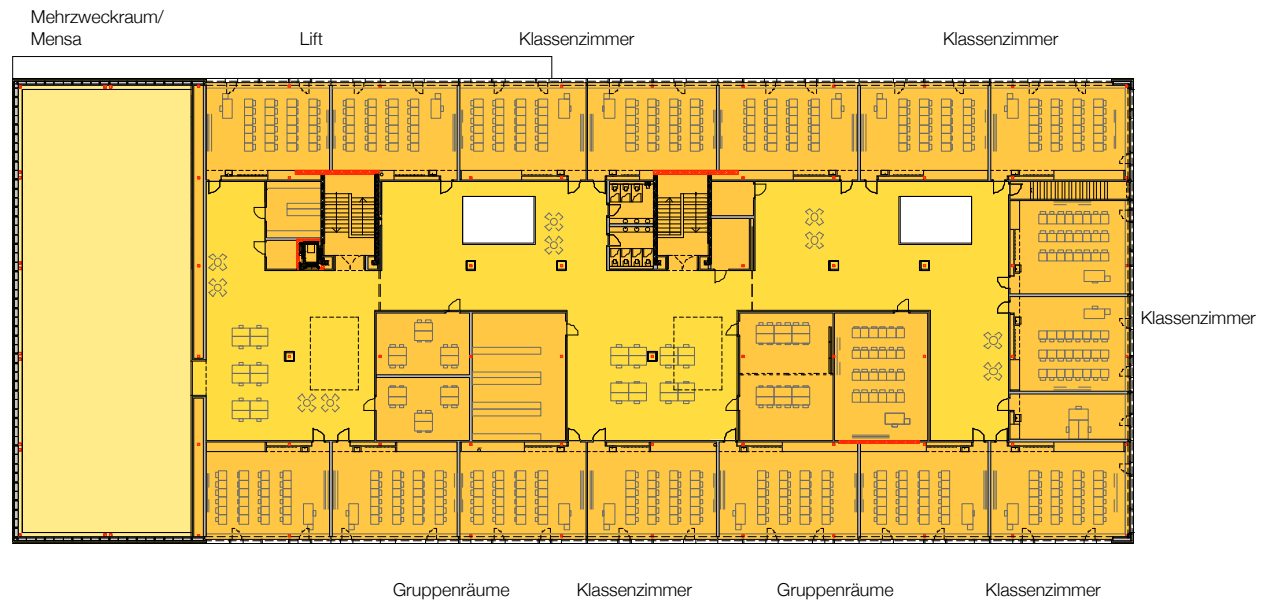
Erdgeschoss



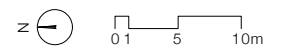
Sporthallen

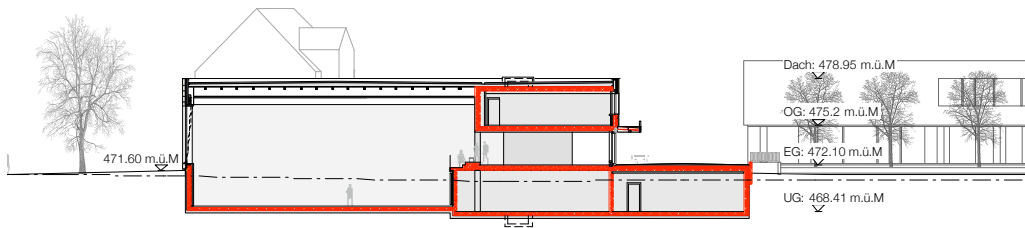


Schulgebäude

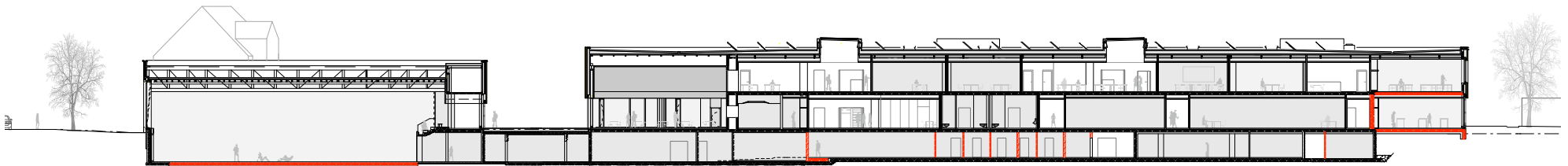


Obergeschoss

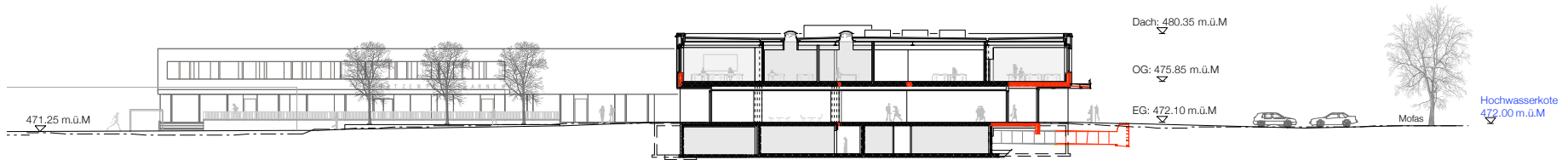




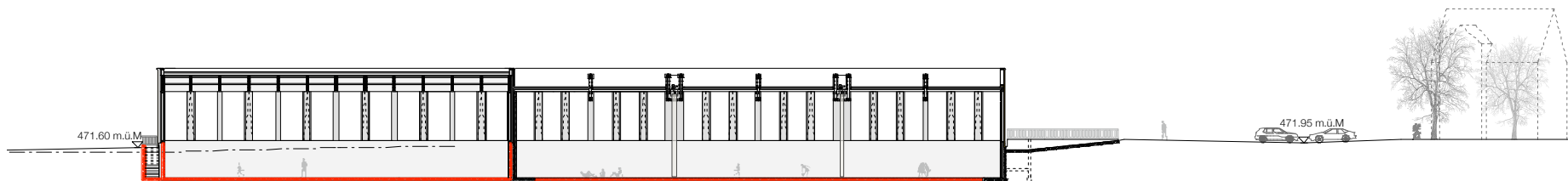
Querschnitt neuer Anbau mit Vereinshalle



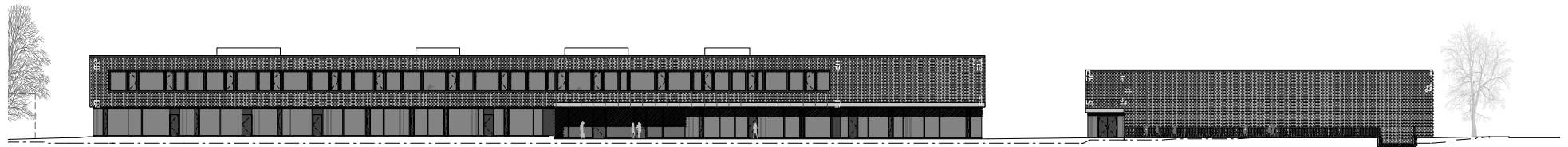
Querschnitt Dreifachhalle / Längsschnitt Schulgebäude



Querschnitt Schulgebäude



Längsschnitt Sporthallen



Ansicht Ost

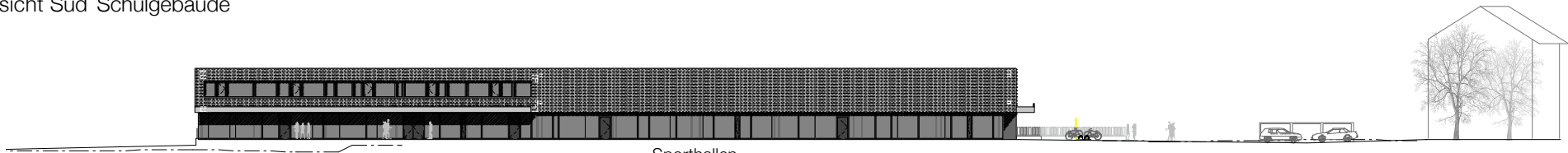
Schulgebäude

Sporthallen



Ansicht Süd Schulgebäude

Schulgebäude



Ansicht Süd Sporthallen

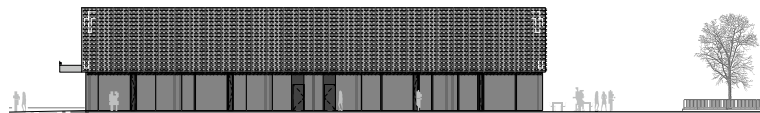
Sporthallen



Ansicht West

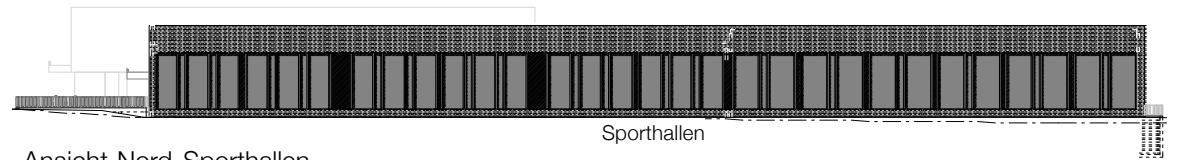
Sporthallen

Schulgebäude



Ansicht Nord

Schulgebäude



Ansicht Nord Sporthallen

Sporthallen